

# Independence District



# Newsletter

**December 2017**

## IN THIS ISSUE...

Indee Art.....	p. 1
Desk of Mr. Schmitt.....	p. 2
Vanderloop Scoop.....	p. 3
Curriculum & Counseling Corner .....	p. 5
State Report Card .....	P. 10
Technology....	p. 13
Recent Events.....	p. 14
Sports & Clubs .....	p. 22
Upcoming Events .....	P. 24
Open Enrollment .....	p. 28
Ads.....	p. 30

## Famous Indee Artwork



This color wheel study was created by Nora Killian, a senior, and daughter of Bernard and Ellen Killian of Independence. Nora is taking 2-D Studio art which is currently exploring color in a variety of mediums. The bright colors of this floral arrangement contain all 12 colors of the color wheel mixed from primary colors: red, yellow, and blue.



**MAIN OFFICE: (715)985-3172**

**CHECKOUT OUR WEBSITE! [WWW.INDPS.K12.WI.US](http://WWW.INDPS.K12.WI.US)**

## From the Desk of Mr. Schmitt

### DOING IT RIGHT



On November 22nd, a large group of educators, local employers, students, and parents, met to share information about what the District is doing in regard to STEAM Education. STEAM stands for Science, Technology, Engineering, Art, Ag, and Mathematics.

After introductions, the district shared with local employers what it is doing in the areas covered by STEAM. But another goal of the meeting was for the district to gather information from local business and industry as to what skills and attributes they seek in employees. What was interesting was that the employers emphasized that traits such as being on time, showing up consistently for work, and being able to follow instructions were just as important as intelligence and knowledge about the work to be done. They also emphasized that being able to correct mistakes and learn from them was a valuable skill to have. A question they asked us was if we allowed cell phones in the classroom and they were happy to hear that we did not as most of employers do not allow their employees to use them when they are working but struggle with employees thinking they can have them out at any time.

They also cited a number of other things they value such as employees who are loyal, willing to work their way up and “pay their dues” to advance in the company, but in order to keep this article at reasonable length, I will expand on only the items I listed in the first paragraph. For the most part, I felt reassured that many of the programs we have implemented in the last five to seven years are addressing the concerns of the employers. Although when first implemented, many of the programs were not popular or well accepted and some push back was experienced. For example, when we be-

gan our behavioral system (PBIS) that we now call the Indee Way at the high school level, some parents and students were very critical and not receptive. Although, I don't think anyone disagrees with Being Respectful, Being Responsible, and Being Safe are proper expectations, our system of acknowledging students for following these expectations and giving them logical consequences when they didn't, wasn't always accepted because it went against the “way we used to do it”.

Another initiative that we have also recently implemented is a Standards Based/Referenced Grading System. Again this has received some push-back as we went away from a traditional system of assigning points to tasks and tests that students did. Instead students are assessed on whether or not they are proficient at a specific standard that is being taught in the class. Therefore, homework doesn't necessarily count towards the grade, but is necessary as practice to master the standard. Effort is necessary in all learning, but simply completing something, doesn't mean you receive credit for it. Getting a zero is no longer an option for students, as the logical consequence for a student not doing their work, is to make them actually do the work. Also, learning from mistakes is a valuable skill, and actually one of the best ways to learn, so students are allowed to be reassessed on standards if they are not successful at first.

I was also taken aback a little at the meeting and at some follow-up meetings afterward that our students admitted to seeing the value of the work we are doing. Although it took some time for them to adjust, students have commented that being graded on what you know is much more fair than being graded on effort, behavior, or just completing tasks to get them done. They also like the idea that they can correct their mistakes and have the opportunity to

Excellence is a habit,  
not an act.  
It takes practice and  
perseverance.

show mastery of a topic later, even if they couldn't at first. The other area that students stated they now understand, and respect, is the relevance of make-up learning time. For those of you not familiar with make-up learning time (MLT), this is a consequence for students who don't have their work completed on time, are wasting instructional time, or are not putting forth the effort to do quality work. Students who are assigned to MLT must stay after school for 45 minutes in order to either make-up the time they wasted or complete the tasks they have not completed. Students commented that they feel this is a good practice to hold students accountable and prepare them for the workplace.

One of the purposes of education is to prepare children for the world of work. I feel that the changes we have implemented are doing that and the meeting on November 22nd reassured me that we are doing the right things. Sure, it would have been easier to keep doing things the way we have always done them, but our data and research showed us that wasn't working. It would be unethical to keep doing what is easy, instead of doing what is right.

I am thankful to be working with a Board of Education that has supported doing things the right way and a staff that has worked through the resistance of change. To improve requires a lot of hard work and we still have many challenges to address, such as our student achievement scores. But in order to do so, we need to have the foundations of respect, responsibility, work ethic, and pride in place. Research shows that the higher expectations correlate to higher achievement, so I am confident we are moving in the right direction to become the Best School Ever.

Barry Schmitt  
District Administrator/9-12 Principal



## Vanderloop Scoop

### Bad Stress, Good Stress



The lights are blinking, the snow is falling and all you hear on the radio is Christmas music. Doesn't it just brighten your attitude wherever you are? For some people this is "the most wonderful time of the year." They look forward to the change of the season, the ability to see relatives they have missed throughout the year, or just take time to watch an old holiday classic with their family. For others this can be an extremely stressful time of year. They do not like cold weather and the ice covered roads it brings. They struggle to make ends meet and now there is an expectation to purchase presents for loved ones. As you can see this time of year sits differently with people. In our school community we know we have different perspectives this time of the year.



As the principal of students from age 4-13 years old I see the many different faces of this holiday season. I see students who come into school with the brightness of the northern star. They are so eager to learn in the classroom and can't wait to put on their snow pants and enjoy the winter wonderland. I also see the students who get uncharacteristically depressed this holiday season. Just today I was in the breakfast room and noticed a student who usually has the brightest smile. Today this student is struggling to find anything close to a smile. When asked what is wrong he didn't want to talk about it. As the day progressed I had the opportunity to reach out again. I found that there was a family issue at home. The holiday time

brings this undue stress upon families and it has an impact on the students we serve. We see it on their faces and they feel it in their hearts.

My hope is everyone has the resources to support themselves and those they love. When this is not possible my hope is they know how to find resources to support their needs. Please read the following tips about how to manage the bad stress in life.

**Accept what you have to accept and change what you can control.** Don't obsess over the things your stress can't move you to change.

**Remind yourself to breathe.** Consciously take a few deep breaths in and slowly let them back out again.

**Help others.** Those who help others have a reduced risk of stress-related mortality than those who didn't report helping others.

**Movement helps.** Take a walk or whatever makes you feel amazing. You have not only selected a healthy alternative, but you release some of the stress you gathered by sitting idle.

**Removing yourself from a situation that is escalating into something you'll find difficult to manage.** Even if you just go for a quick walk around the building before returning to whatever it was, you'll be able to calm yourself, gain perspective, and return refreshed.

As you process how to manage the bad stress please keep in mind that all stress is not

bad. Good stress can actually keep you focused towards accomplishing goals. Some examples of good stress including studying for an upcoming test, a due

date for a project, a class presentation, learning a new skill, meeting new people, performing at our best during competitive sports, or

## PRiORiTIES

- 1.
- 2.
- 3.



anything that involves personal growth.

During this time of year your child will come home with examples of good and bad stress. Second quarter will conclude in a few weeks which means semester grades will be earned and recorded. This may cause some good stress to be perceived as bad stress. Please support their needs by helping them manage what is perceived as bad stress and encouraging the movement towards good stress. Be proud of your children. Keep in mind your personal approach to stress also serves as a model for how they are learning to work through stressful situations. If you find your child is too overwhelmed with stress, please reach out to us at school so we can work with you to find a solution. Enjoy this holiday season and fill it with the good stress that makes you fulfilled and grateful for all that is great in our community.

With Indee Pride,

Robert Vanderloop  
PreK-8 Principal/Director of Special Education  
(715) 985-3172 ext. 104  
vanderloop@indps.k12.wi.us

# Happy Holidays

## Did you Know?

Did you ever find yourself not being able to attend a concert or event that one of your family members are a part of? Well, don't miss another event! Many of the events, including concerts, special presentations and graduation, are live streamed using the school's Polycom camera. On the day of the event, log into the school's website ([www.indps.k12.wi.us](http://www.indps.k12.wi.us)) and on the left side of the page there is a link called Indee TV Live. If you are not available to watch it live, you can also click on the link Indee TV and there are archived events listed.

## Curriculum and Counseling Corner

### Taking Care

Making sure our students have everything they need to be successful is what we do here, and it is what makes this such a special place. Every day we do our best to be sure our students know they are cared for, that they matter, that they can achieve anything that they are willing to work hard for; and that our school and community are here to support them.

It is no secret that our community is comprised of many families (over 50% of our district families) who live with financial stress and hardships that can make daily life stressful, and holidays especially difficult. The holiday season is *another* chance for our school and community to show our students how much they are cared for; and through our partnership with Ashley's Angels Gifts for Kids, and other local sponsorships, we have helped add cheer and hope to the holiday season for many. This year nearly 100 Independence children will receive Christmas gifts through local sponsors that include:

- Ashley's Angels Gifts for Kids
- District Support Professionals
- Teachers
- School Board Members
- Individual Community Members
- Pajama Grandma Legacy
- Rainbow Community Club
- Administration
- Buffalo County Montana Pioneers 4-H Club



Many of our high school students have also volunteered their time to help Ashley's Angels do their work. On the evening of December 5th three of our students traveled to the Winona Walmart to play Santa and 'shop' for needy families, taking great pride in providing that help.

Wishing all of our Indee families a happy holiday season and the very best in new year.

~Mrs. Woychik

# Open Enrollment

Open Enrollment Dates for the 2018-19 school year: February 5 - April 30, 2018

Open enrollment is a program that allows parents to apply for their children to attend a public school other than the school district where they currently reside. Any Wisconsin resident in grades 4K-12 can apply to attend a nonresident school district under this program. The application period is from February 5, 2018 - April 30, 2018. For more information and to apply online, please visit the Wisconsin DPI website.

<https://dpi.wi.gov/open-enrollment>

## Independence

### Scholarship Opportunity Summary

(updated 10/8/17) subject to change)

Complete application materials for most local scholarship applications are available on our school website: [www.indps.k12.wi.us](http://www.indps.k12.wi.us). Click on 'schools', 'high school', 'scholarships'. You will can fill out most online and then print, sign and submit. Annual deadline for most local scholarships is on or before March 1<sup>st</sup>. Email Mrs. Woychik with any questions ([woychikd@indps.k12.wi.us](mailto:woychikd@indps.k12.wi.us))

Award	Amount	Criteria
Academic Excellence Scholarship	\$10,000	Highest cumulative grade point average as of the students 7 <sup>th</sup> semester. Must be citizens or permanent residents of the US.
Technical Excellence Scholarship	\$2250 for up to three years	Must be pursuing a degree at a Technical College. Must have taken at least 3 courses in Business Education, Agriculture, or Technical Education. Must have been an FFA members. GPA
<a href="#">American Legion Oratorical Contest</a>	\$1000, \$500, \$300	Deliver an 8-10 minute speech on student's choice of the Constitution of the United States. Students may participate each of their four years of high school. Tentative Date for 2017- Monday November 6th at 4:30 room 311
American Legion Auxiliary Unit 186		To be determined
Ashley Furniture Engineering/Design	\$3,333.33	Applicants must be pursuing a degree in Engineering: Civil, Mechanical, Electrical, Industrial, Engineering Physics, Materials Science, Engineering Management and Manufacturing. Or Design: Engineering, Industrial, Interior, Product and Visual.
Ashley Furniture Grants in Aid	\$2000	Applicants must be a dependent of an Ashley employee.
Sobotta Engineering /Science Scholarship	\$2000	Student must be pursuing a degree in Engineering or Science.
Beef River Livestock	\$400	Member of Beef River Livestock Shipping Association.
Buffalo County Farm Bureau	\$500	Parent/Guardian must be a member. Student must be pursuing a degree in Agriculture.
FFA Old Timers	Various	Students must be pursuing a degree in an agricultural field.
Maliszewski Agriculture Scholarship	\$300	Student must be pursuing a degree in agriculture.
Countryside Cooperative	Up to 20 \$500	Parent/Guardian must be a member and their occupation must be associated with an Agricultural Industry.
Elk Rod and Gun Club	\$500	Conservation
Wings Over Wisconsin	Varies	Student must be pursuing a degree in conservation, forestry or agriculture.
Community Investment Healthcare Scholarship	\$1000	Student must be pursuing a degree in healthcare. Applications may be found at <a href="http://www.tricountymemorial.org">www.tricountymemorial.org</a>
Grandview Care Center	\$2000-\$15000	LPN and RN

		Must be an employee of Grandview Care Center for at least 90 days and be accepted to a nursing program. <a href="http://www.grandviewhome.org">www.grandviewhome.org</a>
Ginger Everson Memorial	\$1000	Student must be pursuing a degree in healthcare. Applications may be found at <a href="http://www.tricountymemorial.org">www.tricountymemorial.org</a> in Jan/Feb
Lisa Rostvold Memorial	\$1200	Student must be pursuing a degree as a nurse. Applications may be found at <a href="http://www.tricountymemorial.org">www.tricountymemorial.org</a> in Jan/Feb
Laura Graul Memorials	3-\$1000	Student interest in the Performing Arts, Agriculture or Athletics.
Independence Public School Memorial Scholarship Fund	2-\$250 (may vary)	Student must have attended Independence Public School the last two years. 2.5 GPA
Independence Education Association	\$500	Student must be pursuing a degree in education
Independence State Bank	\$500	
Isaacs Memorials	3-\$750	Leadership, Financial Need, Academics
Lions Club	\$350	Student must be pursuing a service related field or participated in a service work during high school.
Ed and Bernice Lyga Memorial	\$500	3.0 GPA
Rainbow Community Club	2-\$500	
Riverland Energy	\$1000	Parent/Guardian must be a member. Students can also get more information or apply on line at <a href="https://www.riverlandenergy.com/content/scholarships">https://www.riverlandenergy.com/content/scholarships</a> in Jan/Feb Random drawing but must be present at annual meeting to win.
Schoenburger Memorial	\$500	Student must be pursuing a degree in Police Science, Criminal Justice or related field. Contact Kim Bautch.
*State Bank of Arcadia	\$250	
Trempealeau County Association of Cooperatives	\$250	Parent/Guardian must be a member.
Tri-County Communications Cooperative	Up to 25-\$500 awards	Random drawing Deadline Feb 1
Trygvasson Lodge	\$100	Student must demonstrate interest in international cultural exchange.
WHTL Mary Little	4-\$250 awards	3.0 GPA and Varsity Letter
Sophia Hope Memorial	Various	<a href="https://docs.google.com/document/d/1mVoWhFGR4iX5nvrWfF4AcEdiic9-7qMvPdhlgfZkgOQ/edit">https://docs.google.com/document/d/1mVoWhFGR4iX5nvrWfF4AcEdiic9-7qMvPdhlgfZkgOQ/edit</a>
Western Technical College	\$500	

## State and National Awards (Subject to change)

Many more will become available. As these come in seniors will receive an email message with application instructions. (Deadlines may change for 2017-2018)

Wisconsin Educational Opportunities Program-TIP (Talent Incentive Program) Grant	Up to \$1800 for up to 10 semesters	<a href="http://weop.dpi.wi.gov/weop_tipgrt">http://weop.dpi.wi.gov/weop_tipgrt</a> Based on financial need.
Kohl Excellence Award	\$1000	Leadership, Citizenship, Community Involvement and Academic Achievement.
Schneider-Emanuel American Legion Scholarship	3 statewide awards of \$1000	Descendant of an American Legion or American Legion Auxiliary
NFO	Various	Student must be pursuing a degree in agriculture.
Ab Nicholas	\$5000-\$10000	Student has played basketball their senior year, will attend a Wisconsin college. <a href="http://www.AbNicholasScholars.org">www.AbNicholasScholars.org</a> Deadline April
Monsanto Ag	Various	Agriculture Deadline Feb
Ronald McDonald House	\$1500	Academic Achievement, financial need, community involvement, work ethic <a href="http://rmhc.org/what-we-do/rmhc-u-s-scholarships/">http://rmhc.org/what-we-do/rmhc-u-s-scholarships/</a> Or <a href="http://www.rmhc.org">www.rmhc.org</a> Deadline January
Hagan Scholarship	Up to \$40,000	3.5 GPA 23 or higher ACT Must work 240 hours per year <a href="http://www.hsfmo.org">www.hsfmo.org</a> Deadline November 15
Daughters of the American Revolution	\$250+	Essay Deadline November 3
Steve Pavich	\$750	Agriculture Deadline March
Farm Kids for College	\$1000	Agriculture <a href="http://www.nfo.org">www.nfo.org</a> Deadline March
SFM Foundation	Up to \$10,000	Parent killed or seriously injured in a workplace accident. <a href="http://www.sfmfoundation.com">www.sfmfoundation.com</a> March
Wisconsin Cattleman's Association	\$500	Background in beef, veal, or dairy industry <a href="http://www.wisconsincattlemen.com">www.wisconsincattlemen.com</a> Deadline March



Carrie Crystal Stuckert Memorial Art Scholarship	Up to \$2000	Art Major <a href="http://www.dreampoolfoundation.org">www.dreampoolfoundation.org</a> Deadline April
Mid West Family Broadcasting	\$500	20inarowwaxx.com click on "Pat Keliher Ag Scholarship" Students must be pursuing a degree in Ag Deadline March
Wisconsin Towns Association	\$1000	Essay "A federal republic form of government: What is it? Why does it work? Do we still have one? Why are town governments critical to its success?"  Application in Student Services  Deadline May
MS Scholarships	Various	<a href="http://nationalmssociety.org/scholarship">nationalmssociety.org/scholarship</a> Deadline January
Identified Learning Disability or ADHD	Up to \$10,000	<a href="http://apply.ncld.org/res/p/EligibilityInfo/">http://apply.ncld.org/res/p/EligibilityInfo/</a>

### FASTWEB.com—Free Nationwide scholarship search.

The Independence School District does not discriminate on the basis of race, color, national origin, sex, disability, or age in its programs and activities and provides equal access to the Boy Scouts and other designated youth groups. The following person/people has/have been designated to handle inquiries regarding the non-discrimination policies: Barry Schmitt Superintendent 23786 Indee Blvd. Independence, WI 54747 715-985-3172 ext. #102 schmittb@indps.k12.wi.us.



## Independence Public School Memorial Scholarship Fund

The purpose of the Independence Memorial Scholarship Fund is to support and encourage students to continue their education by granting yearly scholarship awards.

The Independence Public School Memorial Scholarship is a fund of the Eau Claire Community Foundation.



# DONATE TODAY >>>

Send your donations to Eau Claire Community Foundation, 306 S. Barstow St. Suite 104, Eau Claire, WI 54701 or donate online at [www.indps.k12.wi.us](http://www.indps.k12.wi.us), the School District of Independence. Please note the Independence Public School Memorial Scholarship Fund on your check.

## Everyone, Every Day

## STATE REPORT CARD INFORMATION

Our school year is off to a great start! We are excited about our expansion of science and engineering programs, stronger reading supports, and our growing computer and technology opportunities. As a learning community, we are continually looking to improve Independence Public School. One source we use to reflect on our strengths and areas for improvement is the School Report Card.

The Department of Public Instruction (DPI) creates a School Report Card and District Report Card for every publicly funded school and district in the state. These report cards can be accessed online here: <http://dpi.wi.gov/accountability/report-cards>. The Report Cards are intended to help all schools and districts utilize data on specific measures to target improvement efforts to ensure students are ready for the next educational step – including the next grade level, graduation, college, and careers.

The current **School Report Card, based on the 2016-17 school year and 2 years prior**, looks a bit different than in the past due to changes required by the legislature. The overall idea for how report cards work is the same. At the foundation of the report cards are four priority areas. Schools and districts receive a score for each priority area:

**Student Achievement** proficiency in reading and mathematics on state assessments.

**Student Growth** measured by year-to-year improvements in achievement.

**Closing Gaps** in performance between specific student groups (comparing English language learners, low-income students, students with disabilities, and members of a racial or an ethnic group with their peers).

**On-Track and Postsecondary Readiness** is a measurement, using reliable predictors, of high school graduation and potential post high school success.

The priority area scores are then aggregated into an overall accountability score, from 0 to 100. This score is displayed in the top left corner of the School or District Report Cards. It is important to note that the 0 to 100 accountability score is not a “percent correct” measurement. The score is primarily based on our performance over the past three years, across the four priority areas.

Schools and districts are also evaluated on their level of student engagement – test participation rates, chronic absenteeism rates, and dropout rates when applicable. Based on its score, a school or district receives one of five rating categories, from *Fails to Meet Expectations* to *Significantly Exceeds Expectations*, as well as one to five stars.

Given the changes required by the legislature, many school and district scores changed as compared to the last report card. The changes include a weighting formula to account for poverty when priority area scores are combined into the overall score; a new method of calculating student growth; and the use of Forward Exam data, the third state test in four years. These changes impacted all schools and districts in the state. For Independence School District, it meant our district received a rating of “Meets Expectations.”

DPI has produced two versions of each Report Card: a quick one-pager labeled “School Report Card” and lengthier, detailed version labeled, “School Report Card Detail.” Both versions can be accessed online at <http://dpi.wi.gov/accountability/report-cards> along with resources that explain the report cards. The one page School Report Card for our District is included in this newsletter.



## Independence District Report Card | 2016-17 | Summary

**Overall Score**

72.6

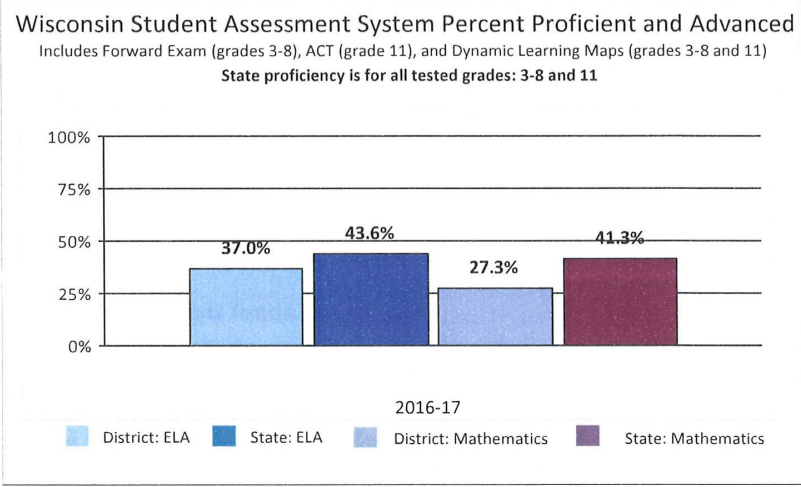
☆☆☆☆☆  
**Meets Expectations**

Overall Accountability Ratings	Score
Significantly Exceeds Expectations	83-100 ★★★★★
Exceeds Expectations	73-82.9 ★★★★☆
Meets Expectations	63-72.9 ★★★☆☆
Meets Few Expectations	53-62.9 ★★☆☆☆
Fails to Meet Expectations	0-52.9 ★☆☆☆☆

Priority Areas	District Max Score	State Max Score
<b>Student Achievement</b>	<b>52.5/100</b>	<b>66.7/100</b>
English Language Arts (ELA) Achievement	27.5/50	34.3/50
Mathematics Achievement	25.0/50	32.4/50
<b>District Growth</b>	<b>68.9/100</b>	<b>66.0/100</b>
English Language Arts (ELA) Growth	37.8/50	33.0/50
Mathematics Growth	31.1/50	33.0/50
<b>Closing Gaps</b>	<b>72.6/100</b>	<b>61.7/100</b>
English Language Arts (ELA) Achievement Gaps	41.2/50	17.3/25
Mathematics Achievement Gaps	31.4/50	16.8/25
Graduation Rate Gaps	NA/NA	27.6/50
<b>On-Track and Postsecondary Readiness</b>	<b>89.5/100</b>	<b>86.5/100</b>
Graduation Rate	39.4/40	36.4/40
Attendance Rate	37.4/40	37.1/40
3rd Grade English Language Arts (ELA) Achievement	7.7/10	7.0/10
8th Grade Mathematics Achievement	5.0/10	6.0/10

Student Engagement Indicators	Total Deductions: 0
Absenteeism Rate (goal <13%)	Goal met: no deduction
Dropout Rate (goal <6%)	Goal met: no deduction

District Information	
Grades	K4-12
Enrollment	389
Within District Mobility	0.0%
Between District Mobility	8.0%
<i>Race/Ethnicity</i>	
American Indian or Alaskan Native	0.0%
Asian	0.0%
Black or African American	0.5%
Hispanic/Latino	36.0%
Native Hawaiian or Other Pacific Islander	0.0%
White	61.7%
Two or More Races	1.8%
<i>Student Groups</i>	
Students with Disabilities	10.3%
Economically Disadvantaged	50.4%
Limited English Proficient	27.5%



<sup>^</sup>Note: Outlier score fluctuation is noted by <sup>^</sup> when any school or district report card has a 10-point or greater change (up or down) in both Overall Score and Growth Score. This amount of change may or may not be reflective of actual school/district performance. DPI encourages review of other priority area scores in the detailed report card for a better understanding of school performance. Details: <http://dpi.wi.gov/accountability/report-cards>

FINAL - PUBLIC REPORT - FOR PUBLIC RELEASE



## Independence

### District Report Card | 2016-17 | Notes

#### Rating Category Descriptions

- **Significantly Exceeds Expectations:** District greatly exceeds state expectations for student achievement, student growth, educational equity, and preparing students for educational milestones, including college and career readiness.
- **Exceeds Expectations:** District exceeds state expectations for student achievement, student growth, educational equity, and preparing students for educational milestones, including college and career readiness.
- **Meets Expectations:** District is meeting some state expectations for student achievement, student growth, educational equity, and preparing students for educational milestones, including college and career readiness.
- **Meets Few Expectations:** District is meeting few state expectations for student achievement, student growth, educational equity, and preparing students for educational milestones, including college and career readiness.
- **Fails to Meet Expectations:** District is failing to meet state expectations for student achievement, student growth, educational equity, and preparing students for educational milestones, including college and career readiness.

#### Priority Areas

- **Student Achievement** measures the level of knowledge and skills among students in the district, compared to state and national standards. It includes a composite of English language arts (ELA) and mathematics performance by the "all students" group in the Wisconsin Student Assessment System (WSAS) for all tested grades in the district.
- **District Growth** describes how much student knowledge of ELA and mathematics in the district changes from year to year. It uses a value-added score that compares the change in a student's scores to those of observationally similar students.
- **Closing Gaps** provides a measure that reflects the statewide goal of having all students improve, while narrowing the achievement and graduation gaps between groups of students. This measure acknowledges districts that raise the performance of traditionally lagging student groups, contributing to the closure of statewide gaps.
- **On-Track and Postsecondary Readiness** indicates the success of students in the district in achieving educational milestones that predict postsecondary success. It includes the graduation rate and the attendance rate as applicable to the district. It also includes measures of third-grade ELA and eighth-grade mathematics achievement as applicable to the district.

#### Student Engagement Indicators

Student Engagement Indicators are measures outside the four Priority Areas that affect student success or the soundness of the report card. Each indicator has a goal, and districts that fail to meet that goal receive a point deduction from their Overall Accountability Score. Goals were set by looking at statewide data and establishing thresholds that identify districts contributing the most to lowering Wisconsin's overall performance in the areas below. Note that Test Participation is no longer a Student Engagement Indicator, so there is no longer a deduction when this rate falls below 95 percent. Test participation among subgroups is still reported on the Student Engagement Indicators page for informational purposes only and is not used in district scoring on the 2016-17 report cards.

- **Absenteeism Rate:** This indicator describes the proportion of students in the district who attend school less than 84.1% of the time. If the absenteeism rate in the district is 13% or more, five points are deducted. The absenteeism rate is different from the attendance rate because it measures students who are absent from school a certain amount of time, not how often students are present in school.
- **Dropout Rate:** The goal for all districts is to have a dropout rate of less than 6%. A district not meeting the goal has five points deducted from its score. Note that dropout rate is not the opposite of graduation rate. A dropout rate includes any student who leaves school in grades 7-12 without expecting to earn a high school diploma, while a graduation rate counts students who earn a high school diploma within a certain time (four or six years) after starting ninth grade.

#### About the Data

- The data presented in this report card are for public and state accountability purposes.
- Student performance on the Wisconsin Student Assessment System (WSAS) is the foundation of report cards. WSAS data include Forward Exam, ACT and Dynamic Learning Maps (DLM) in 2015-16 and 2016-17; Badger Exam, ACT and DLM in 2014-15; and Wisconsin Knowledge and Concepts (WKCE) and Wisconsin Alternate Assessment - Students with Disabilities (WAA-SwD) in 2013-14 and before.
- Some supplemental data that are not used in accountability calculations are presented in this report card for informational purposes in order to provide context. Additional data on student performance are available here: <http://dpi.wi.gov/wisedash>.
- To protect student privacy, data for groups of fewer than 20 students are replaced by asterisks on public report cards.
- "NA" is used when data are Not Applicable, e.g., a district that does not graduate students will have NA listed for graduation results.
- The calculations used in this report card are described in the Technical Guide and Interpretive Guide: <http://dpi.wi.gov/accountability/report-cards>
- State comparison scores shown on page one are shown for context only. They are not used to determine this district's score or rating.

**Wisconsin Department of Public Instruction | [dpi.wi.gov](http://dpi.wi.gov)**  
Report cards for different types of schools or districts should not be directly compared.

Page  
**2**

## Striving for Balance

Life has become a balancing act between our personal lives and professional lives as well as managing our families and their activities and then include the worries about the academic needs of our children and their use of technology or screen time cause even more stress. If you are like me with a busy a family involved in many activities, I often wonder how you achieve this balance. For me, I look to what tools or resources do I have available to help me stay organized. Technology is plentiful in today's society and yet it can often bring about more stress in our lives. As families we need to strive for balance between using technology and media and when to unplug from our devices. One step I take is making sure all events are scheduled on our Google Calendar and setting limits with use of technology at home.

All of our Middle and High School Students have access to using a Google Calendar here at school to help keep them organized. Many of our teachers use Google Classroom which integrates with Calendar allowing our students to see at a glance when assignments are due or upcoming projects or test dates. They can even add in their own events like sports practices, concerts, etc. These calendars then can be shared with others so that they can view the different events that they will be involved in. I rely on my calendar to keep me organized between the different work meetings, family events, my kids' sport schedule and my husband's work schedule. It helps keep us all on the same page about the activities we have going on in our lives. It is a balancing act but this use of technology is great for keep my family organized.

Another tool we use in our family is setting limits with technology and device use. My chil-



dren are required to "unplug" for a certain time period each day and we have guidelines we follow about appropriate technology use such as no devices at the table when we eat and after a certain time all devices are turned off. Setting guidelines or expectations about technology use

can be hard for some parents or other parents want to really monitor what their child is viewing on their device there are several apps or tools that parents can use to help.

Here is a list of Parenting Apps:

Monitor and Blocking:

[OurPack](#) - iOS or Android this app helps with mobile guidance for your family.

[Screen Time](#) - Set screen time limits for iOS, Android and Kindle

[Circle with Disney](#) - \$99 device that uses your WIFI network at home to allow parents to set filtering criteria, screen time limits and bed times for all devices in the house.

[Curbi](#) - Free for upto 2 devices. Parents can set controls on devices

[ParentKit](#) - Parents can control and schedule what is on their child's iPod, iPad, iPhone

[NetSanity](#) - Block App, Game Use, filter by category and more

[FamilyTime](#) - monitor and manage child's cell phone activities, location, Internet, Phone [logs](#), [App Blocking](#), [Geofencing and more](#)

[Net Nanny](#) - Paid per device, features include parental controls, internet filtering, time management, social media monitoring, blocking of content, reports and more

[Mobile Fence](#) - Paid based on number of devices, functions include parental controls, internet filtering, blocking, screen time limit, geofencing and more

[XFINTY TV Online Parent Controls](#) - restricts what children can watch online



Google  
Classroom

There are also apps that provide monitoring while your teen is driving.

[Cell Control](#) - prevents texting while driving, enforceable technology to stop distracted driving  
[Drive Safe Mode](#) - control mobile use while teen is driving

Mindful Apps, apps that monitor the amount of time you use your device

[Moment](#) - An iOS app that automatically tracks how much you use your iPhone and iPad each day. If you're using your phone too much, you can set daily limits.

[Checky](#) - For both iOS and Android, Checky lets you track and geographically map your phone use.

Overall, it is about what we as parents do to role model the use of technology and strive to find the balance between using our devices and unplugging from them. We know that technology is not going away so it is best practice to set those limits now and enforce them so that our children learn to use devices appropriately and at the appropriate times.

Melissa Pientok  
 Technology Integration Specialist

## American Legion Oratorical Contest 2017

The American Legion Oratorical Contest was held November 6th. This is one of our largest local scholarship contests and one that ANY high school may participate in each year. Participants must deliver an 8-10 minute speech on any part of the United States Constitution. The winner advances to the county, then district, then state, and possibly national competitions. This year's participants and awards winners were:

1st place-Madelyn Woychik

2nd place-Anna Bragger

3rd place-Allison Bragger

\*Because Madelyn was unable to continue to the county level, Anna will advance.

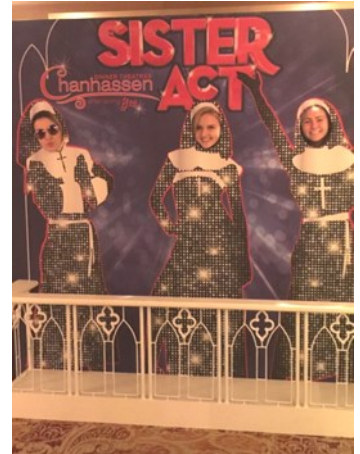


## Christmas in Minneapolis 2017

Saturday, December 9<sup>th</sup>, 9 High School students, 3 parents, and 2 school chaperones traveled to Minneapolis for "A Minneapolis Christmas". The start of our weekend was at the Chanhassen Dinner Theatre in Chanhassen, MN. We enjoyed a wonderful dinner before being entertained with "Sister Act". Back on the Chanhassen stage by popular demand – Sister Act, is the feel-amazing musical comedy smash called, "Ridiculously fun," by the *New York Post*. Featuring original music by 8-time Oscar-winner, Alan Menken (*Beauty and the Beast*, *The Little Mermaid*, *Little Shop of Horrors*, *Newsies*) *Sister Act* tells the hilarious story of Deloris Van Cartier, a wannabe diva whose life takes a surprising turn when she witnesses a crime and the cops hide her away in the last place anyone would expect –a convent! Set around the Christmas holidays, Deloris helps her fellow sisters find their voices as she also rediscovers her own in a sparkling tribute to the universal power of friendship. This may have been a little before the students time, but it was enjoyed by all.

We headed back to our hotel for a wardrobe change. The entire group decided to head over to Loring Park, which held a Holidazzle. The Minneapolis Downtown Council and Minneapolis Park and Recreation Board partnered together to bring Holidazzle to Loring Park. As downtown Minneapolis' premier holiday celebration, Holidazzle has delighted residents, visitors and downtown employees for years. Now, in 2017, this tradition is bringing family-friendly programming to Loring Park and is free and open to the public. Holidazzle is a Minneapolis tradition, while there we enjoyed a Minneapolis-centric experience that included well-known local businesses and products. Prepared food and beverages, packaged food, merchandise, free music and other festive entertainment for all ages.

Holidazzle creates a community gathering place and holiday destination for people of all ages to come together and celebrate winter in Downtown Minneapolis. This year's Holidazzle featured stories highlighting local people, products and places that showcase the food scene, art district, park system, active lifestyle, local entertainers, and community groups that make Minneapolis special. Minneapolis-centric vendors provided options for prepared and packaged food, beverages, and unique gift and craft items. This year's programming lineup will included the outdoor skating rink, visits from Santa Claus, musical performances from bands and choirs, and fireworks. We heated up in the warming house, then continued our trek testing out some of Minnesota's finest products. Vikings, moose, and abominable snow men alike were welcome. We strolled through the festive lights and fol-



Our very own sisters Heather, Nora, and Allison.



Some of our skaters holding up the wall.

lowed the savory smells as we enjoyed our holiday experience in the heart of the city. Skating was the highlight of Holidazzle for the girls. Some were first time skaters and we even had a mom who hadn't skated for many years.

A group headed out for Chinese, some went back to the Hotel for pizza and relaxation, and another group spoiled themselves at the Smack Shack with lobster dinners.

We were up bright and early Sunday morning. Since our pool was down for maintenance, the group decided to head over to the Mall of America. With their Christmas hours, we were on the road by 8:30am. After some shopping and lunch we headed over to the Plymouth Playhouse in Plymouth, MN where we saw The LOONEY LUTHERANS in "Hold the Lutefisk".

"You'd better watch out, you'd better not cry..." Because the Looney Lutherans are coming (back) to town with more tips for surviving the holidays, the Lutheran way. Prepare to keep those New Year's resolutions with exciting new exercise tips (the 12 Days of Housework); hear the Loonies extol the virtues of their new Cuisinart 12 speed mixers; and learn the secret to getting on Santa's "nice list" (hotdish, anyone?) Whether your in-laws have overstayed their welcome, or the furnace

is acting up, take a break from the stress of the season by celebrating the holidays with the Looney Lutherans. (And, of course, you don't have to be Lutheran to love 'em...

Needless to say the students were the youngest in the crowd. But we enjoyed the comedy of the Norwegian Church ladies "Don't ya know!"

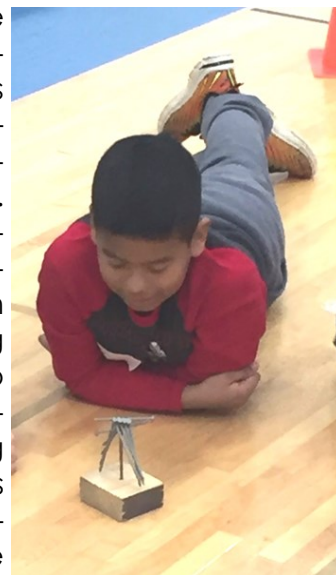
The trip was headed up by Tracy Halama who does it so students can experience theatre, since both the making of theatre and attending theatre contribute to education and literacy. Many of the students at IHS don't see beyond Independence. This is an opportunity for them to experience something bigger. This trip is a smaller version of what 2 former High School teachers had started over 20 years ago. After their retirement there had been a year without the arts trip. Tracy took it on about 5 years ago in hopes to continue the experience. If students are interested in attending next year, watch the school announcements and your emails at the end of the year. Thanks to the school board and administration for allowing us to continue this great experience.



Pictured are: Allison Bragger, Nora Killian, Heather Marsolek, Adaelyn Kalk, Emma Pietrek, Alexis Dahl Abramczek, Loraina Kalk, Mercedes Matchey, and Emerson Pronschinske.

## Third Grade Creative Problem Solving Day

On November 14, six 3rd graders traveled to Blair-Taylor to work with other area 3rd graders to solve some problems in creative ways. All students were split into groups and had to work with other students to solve a number of challenges. The first challenge of the day was to introduce yourself in a creative way to your group members. Once introductions were complete each group was then challenged to figure out a way to get untied from a partner. Other challenges include directing blindfolded students through a maze without using any words. They also had to act like a scientist and make an egg float with the materials given to them. The favorite challenges of the day included the nail



challenge and the Tower of Pasta Challenge. These challenges included balance several nails on one nail and building a structure that could hold the most weight. Throughout these challenges our students were working on using 21st century learning skills of collaboration, communication, critical thinking and creativity. Our 3rd graders did a great job working together to complete each task and had a great day!





## Upcoming Enrichment Events Include:

Event	Date	Grades
Vocabulary Showdown	January 23	3-8
Young Writers Workshop	February 27	4-8
Spelling Bee - (District)	March 8	4-8
Spelling Bee (Rebel)	March 20	Winners of District Bee
5th Grade Performing Arts Fair	March 26	5th Grade
Kids College	April 6	5th Grade
Heritage Fair	April 19	4th Grade
Battle of the Books	May 1 & 8	5-8



BR – l to r: Hidver Monroy Montalvo, Issac Halvorson, Hunter Kreibich  
FR – l to r: Jaelyn Pronschinske, Emily Hovey, Danika Ekern



## Winter Clothes Needed!

Gently used snow pants (sizes 4-10), snow boots (kids 11-4), and mittens or gloves (prefer heavier snow mittens or gloves). We DO NOT need any hats at this time.

Believe it or not, the economy has made it tight for everybody, and you may not think about it, but there are plenty of needy students around here, and we try to do our share to help them.

These items can be dropped off at the Public School Office. Students will be a lot warmer thanks to your generosity.



## 2017 Alumni Panel

It was a great pleasure to welcome back four Independence Alumni for a panel presentation on career paths. On Wednesday November 22nd, Bria Halama, Sean Warner, Melissa Bautch-Gamez, and Bob Boland spent one hour with our middle and high school students sharing their education and career paths, and fielding questions.

A clear message that hard work and dedication can allow you to reach any goal was shared by all four panel members, along with much inspiration and encouragement for students to dream big. Response from the student body was very positive and we hope to offer more panel presentations like this in the future. If you are an Indee Alumni interested in participating, or know of someone that might be, please contact Mrs. Woychik at 715-985-3172 Ext. #111 or [woychikd@indps.k12.wi.us](mailto:woychikd@indps.k12.wi.us). Any and all education and career paths are welcome!



### 2011 Graduate Bria Halama

Attended University of Minnesota after being recruited and receiving a small scholarship to run track and field there. After 2 years in the twin cities she transferred to the University of Wisconsin La-Crosse in order to finish her degree at a smaller school, closer to home, and to be a part of their successful track and field program. She graduated from UW-Lacrosse in May 2016 with a degree in Therapeutic Recreation, Pre-Occupational Therapy. Bria has also had a very eventful career as a collegiate athlete and is continuing to train for the triple jump.



Currently, Bria is working full time in Eau Claire at the Sacred Heart Hospital Outpatient Therapy clinic as a rehab aide, and applying to Master's programs in Occupational Therapy.

### 2011 Graduate Sean Warner

Attended University of St. Thomas (St. Paul, MN) with a focus on finance and Spanish graduating in May of 2016. Current Job: Associate Planner at Target, forecasting, budgeting, analysis, etc. for Accessories and Apparel.



### 2000 Graduate Melissa (Bautch) Gamez

Attended UW-Eau Claire-School of Business, studying abroad for a semester in France in 2003. She graduated in 2005 with a Bachelor of Science degree in Marketing and Minors in International Business and French. After graduation, Melissa did an international internship in Morocco through an international student organization on campus called AIESEC. The internship was focused on the Salaam (Arabic for peace) program which was a

government funded program designed to encourage cultural and religious understanding between the US and handful of predominantly Muslim countries after the attacks of 9/11. After her 3 month internship, where she taught English to a group of students in a low-income neighborhood, she stayed in Morocco for another year and coordinated the Salaam Program for approximately 20 other US students.



Currently Melissa is employed at Ashley Furniture Industries, Inc. in the Imports Department working on several different teams within the department ensuring that imported goods are able to clear US Customs. This is her 11th year with Ashley. Melissa became a manager in 2015 and within the last 6 months has transitioned to the role of International Trade Compliance Manager within the Imports/Exports Team. Melissa and her husband Kole live just outside of Arcadia with their two young boys, Brody and Beau, and dog, Murphy. She loves riding horse, playing sports (especially softball), and working on DIY/Pinterest inspired projects around the house.

Currently Melissa is employed at Ashley Furniture Industries, Inc. in the Imports Department working on several different teams within the department ensuring that imported goods are able to clear US Customs. This is her 11th year with Ashley. Melissa became a manager in 2015 and within the last 6 months has transitioned to the role of International Trade Compliance Manager within the Imports/Exports Team. Melissa and her husband Kole live just outside of Arcadia with their two young boys, Brody and Beau, and dog, Murphy. She loves riding horse, playing sports (especially softball), and working on DIY/Pinterest inspired projects around the house.

### 1998 Graduate Bob Boland

Bob attended UW-Madison from 1998-2003, and graduated with a Bachelor of Science in Mechanical Engineering. While in college Bob was involved in student design teams, the ASAE ¼ Scale Tractor Competition and the SAE Clean Snowmobile



Challenge. During the summers while in college he worked a co-op at Kohler, and two internships at Oshkosh Corporation. Bob's first job out of college was at Oshkosh Corporation and he also worked in the Defense Department as a Design Engineer and Project Engineer on a variety of prototype military vehicles from 2003-2014.

In 2014 Bob moved back to the area and currently works at Trane in La Crosse as a Product Design Engineer, working on a variety of design improvements for the commercial water cooled chillers that are manufactured in La Crosse.

### WANTED: Yearbook Pictures

The yearbook is in need of your help. If you have fantastic pictures of our Indee students playing a sport, having fun cheering at a game, or just plain fun, candid pictures, please submit them to Alie Bultman so that we have a lot of pictures to choose from for the yearbook this year. We are looking for all ages 4K-Seniors. Please remember that all high school pictures will be considered for the high school yearbook and all elementary and middle school pictures will be considered for the elementary/middle school yearbook. Please take and send pictures throughout the school year. Please call Alie Bultman if you have any questions at 715-985-3172, ext. 139 or via email at [bultmana@indps.k12.wi.us](mailto:bultmana@indps.k12.wi.us). Submit pictures to her email as well.



The yearbook is in need of your help. If you have fantastic pictures of our Indee students playing a sport, having fun cheering at a game, or just plain fun, candid pictures, please submit them to Alie Bultman so that we have a lot of pictures to choose from for the yearbook this year. We are looking for all ages 4K-Seniors. Please remember that all high school pictures will be considered for the high school yearbook and all elementary and middle school pictures will be considered for the elementary/middle school yearbook. Please take and send pictures throughout the school year. Please call Alie Bultman if you have any questions at 715-985-3172, ext. 139 or via email at [bultmana@indps.k12.wi.us](mailto:bultmana@indps.k12.wi.us). Submit pictures to her email as well.

## STEM-Science, Technology, Engineering, and Math Community Partnership 2017 Minutes

On November 22, 2017 we held our second, of what will be an annual conversation, about the Science, Technology, Engineering, Ag, Art/Design, and Math work we are doing, in collaboration with the community, to prepare our students for a broad range of post high school opportunities.

**Purpose:** strengthen communication between our district and local industry, and better prepare our students for their choice of post high school credential and career.

### Attendance-

**Teachers:** Jenna Sonsalla, Amber Guza, Jason Hovell, Kayla Olson, Collin Manley, Jenna Buss, Riley Abing, Cheyenne Steiner, Julie Manor

**Administrators:** Barry Schmitt, Dawn Woychik, Rob Vanderloop, Melissa Pientok

**Parents:** Jackie Cooper, Jake Rombalski, Jen Rombalski, Jeff Cooper,

**Students:** Gabe Rombalski, Vincent Skroch, Al Woychik

**Industry:** Ken Halama (Indee Metal Works), Jackie Cooper, Jeff Cooper, Kris Gengler, Alex Flynn, Kercia Mueller, (Ashley Furniture), Jake Rombalski (WTC), Joe Bragger (Bragger Farms), Chris Blaschko (Supreme Graphics), Jami Kabus (Hi Crush), Nicole Laufenberg, Pat Rohn (Nelson Global), Liz Boecker (TUMMA)



### School and District Sharing-

**NOTES HERE:** [Broad overview given of our district.](#)

### Industry Sharing--

- Students need to be able to interact, contributing/communicating within the workplace
- Students need to be able to learn from mistakes (they like how we are working on growth mindset)
- Showing up on time is a big issue, poor listening skills (trouble following simple instructions)
- Employees need to be trainable
- Ability to organize and prioritize is important
- Employees struggle to leave their phones off the floor.
- How you present yourself is important- background checks, social media
- Students need to know how to be professionals (writing professional emails!!)
- Nelson Global is more than just welding (electrical, CAD programming, mechanical, blueprint reading, risk management, HR-soft skills)
- Nelson Global is working closely with B-T to offer student experiences
- Ashley 460 openings between Whitehall and Arcadia (70% on the floor)
- Ashley wants to bring people in for tours
- Creating their own standards and qualifications for products at Ashley
- "Hire for attitude train for skill"-- Jackie Cooper
- Hard to get people to move to our area.

- Ashley gets about 1000 apps. Only hire about 200 (applicants may not show up, fail drug tests, etc.)
- Portfolios are very important if limited job experience
- Expose students to graphic design programs (adobe suite: illustrator, photoshop, indesign)
- At Ashley there are entry level jobs...if you have the right attitude you can move up without formal training
- Social media policies are enforced on the job
- Being organized, not procrastinating is very important
- Transferrable skills help students understand how their skills can be used in multiple areas.
- Liz (TUMMA-Manufacturing Alliance): can help coordinate work based learning opportunities
- Suggested taking freshman through tours of local business just to see what they have to offer
- Look into Skills USA program
- Nelson Global*--Need: welding skills, weld capstone (B-T), electrical, mechanical, hydraulics, basic computer skills, basic blueprint reading, CAD programming, tape measuring, people skills (HR)
- Ashley*--Need: Classes/Skill: CVTC, WTC, CNC machining, UW Stout - Manufacturing engineers, packaging engineers, Graphic Designs- public speaking skills, representing yourself, your department and your company, writing skills, 2 or 4 yr degree, job experience, building strong portfolio, no experience = how can you sell what you've done outside, creative thinking, Adobe Suite (Illustrator, Photoshop, InDesign),
- Consultation on Indee shop space: consider 3-5 year plan for updates of metals shop and consider enhanced precision machining course(s).

### Student and Parent Sharing--

Parents: Appreciate variety of opportunities offered; happy with our PBIS program, academic skills, diversity; emotional support very important-could use some work on this; expect kids to be safe, get a good education; wants them to want to go to school, growth mindset; would like more tech ed/machinist courses; happy with culture of growth mindset; add some focus on entrepreneurship

Students: Like the standards based learning, and all of the different opportunities offered; like opportunities at WTC

### Next Steps (this will expand follow up discussions happen internally)--

- Follow up meeting with students, staff, in attendance (November 27-December 7),
- Report to School Board
- Follow up on Skills USA and Character Strong
- Share notes and follow up with all staff emphasizing employer needs for personal, and professional soft skills; including communication, collaboration, work ethic, willingness to make mistakes and take feedback.
- Next year's meeting better balance of school sharing and industry sharing. We were limited on time this year and did not have time for classroom tours. Consider adding Linda Killian Baures (Bus Ed)

Next meeting will be held Tuesday, November 20, 2018

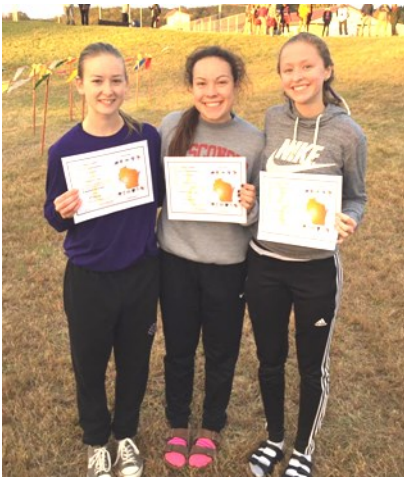
Please contact Dawn Woychik [woychikd@indps.k12.wi.us](mailto:woychikd@indps.k12.wi.us) 715-985-3171 Ext. #111 with follow up questions, concerns, and suggestions.

## INDEE APPAREL

The Booster Club has Indee Apparel for sale. It is cash and carry. Sizes are kids Small through Adult XL. Sizes and styles are limited. Stop in the school office for more information.

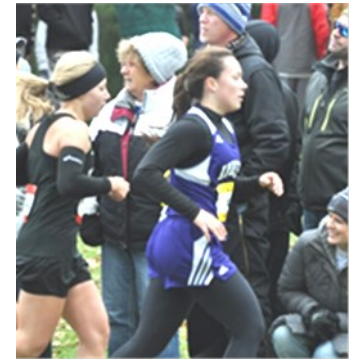


# STATE CROSS COUNTRY 2017



Congratulations on 2nd Team All Conference - MaKayla Saul (L), 1st Team All Conference - Cassidy Kabus and Lauren Sylla.

DIVISION 3 GIRLS		28:09
RESULTS BY PRIME TIME TIMING		
46	MYA ANDREWS	MARSHALL 21:17.13
47	MIKAYLA FLYTE	WEST BAY AREA 21:17.29
48	SAM NELSON	WESTON 21:17.31
49	ELLEN MOORE	LOUISIANA ACADEMY 21:18.14
50	KYRA ANDREWS	MARSHALL 21:20.10
51	MARIELLE BANCO	THE PRAIRIE SCHOOL 21:20.41
52	RYANNE SCHNEIDER	AQUINAS 21:25.96
53	PAYTON HAYS	OOSTBURG 21:26.29
54	CASSIDY KABUS	INDEPENDENCE/GILMANTON 21:26.42



Congratulations, Cassidy Kabus on State Qualifying - 1st female runner from Independence-Gilmanton!



## Indees Football 2017



### **Congratulations to the Indees Football on their All Conference Selections!**

FR L to R: Isaac Pape – 1<sup>st</sup> Team All-Conference Defensive Back and Wide Receiver, 1<sup>st</sup> Team All-Conference Jesse Pientok – 1<sup>st</sup> Team All-Conference Offensive Line, and Dayne Keenan – 1<sup>st</sup> Team All-Conference Middle Linebacker and Running Back. MR: Hunter Fredrickson – 1<sup>st</sup> Team All-Conference Outside Linebacker, and Dustin Knopps – 2<sup>nd</sup> Team All-Conference Offensive Line. BR: Sam Killian - 1<sup>st</sup> Team All-Conference – Tight End, Ean Wright – 2<sup>nd</sup> Team All-Conference Defensive Line, Justin Samson – 2<sup>nd</sup> Team All-Conference Outside Linebacker, Ian Pfaff - 1<sup>st</sup> Team All-Conference Quarterback, and Russ Heiden - 1<sup>st</sup> Team All-Conference Offensive Line and Defensive Line.

## NHS

As the new 2017-2018 Independence Honor Society advisor, I would like to formally introduce this year's new inductees: Nicole Filla, Amy Lien, and Daniella Warner. Each 2017-2018 inductee is a junior this year. Residing members of the Independence Honor Society include Morgan Becker, Anna Bragger, Cassidy Kabus, Nora Killian, and Maddie Woychik, all of whom are seniors this year.

Demonstrating leadership and responsibility are characteristics that are highly valued within the Independence Honor Society. There are various events that the inductees will be assisting with: Veteran's Day Program, Holiday Fair, Family Learning Day, Registration Day, and Child Development Day. Not only will inductees be assisting with community events, but they will also be

more active within the school. Independence Honor Society would like to provide more opportunities for student body to have tutoring appointments with members and have members be school ambassadors for when we have visitors or new students.

I am excited to work with our members and am looking forward to being more involved with community events and school activities.

--Christine Hruza  
English/Language Arts Teacher  
Independence Honor Society  
(IHS) Advisor

Independence High School--BSE!  
23786 Indee Boulevard  
Independence, WI 54747

## Congratulations Lynnsey!



Junior Middle Hitter, Lynnsey Tuschner, was named to the Dairyland 2nd Team All Conference Team for the 2017 Volleyball Season.

## NOTICE OF SCHOOL BOARD ELECTION (§.120.06(6)(b), Wis. Stats.)

NOTICE IS HERBY GIVEN to qualified electors of the Independence School District that a School Board election will be held on Tuesday, April 3, 2018, to elect a school board member to the seat currently held by Jeff Bautch for the at-large positions whose terms expire in April 2018. The incumbent has indicated they will not be a candidate in this election. The term of office of this School Board member is three years, beginning May 1, 2018.

NOTICE IS FURTHER GIVEN that any qualified elector desiring to be a candidate for this position on the school board shall file a Declaration of Candidacy at the Independence School District Office, 23786 Indee Blvd, Independence, WI not earlier than Friday, December 1, 2017 and not later than Tuesday, January 2, 2018 between the hours of 7:30 AM and 4:00 PM Monday thru Friday. The forms may be mailed to the address noted above or filed personally with the school district clerk prior to 4:00 PM on Tuesday, January 2, 2018.

NOTICE IS FURTHER GIVEN that if a primary is necessary, the primary will be held on Tuesday, February 20, 2018.

A description of the school district boundaries can be obtained from the district office.

Dated this 1st day of November, 2017.

Leah Matchey, Clerk  
Independence School District



## School Closing Information

A reminder, it is that time of year when bad weather can suddenly cause school to close. We urge you to discuss emergency procedures with your children so they know what to do when we close early or start late.

We will again use the Alert Now system to inform parents of any school closings, delays or late starts. You will receive a computerized phone call on your child's main contact phone number with a recorded message.

Also for your convenience, we have listed below the radio and TV stations that will be notified of our closing, early dismissal or late start. Thank you for your understanding and assistance should we need to change our normal routine.

- ⇒ WQOW – Channel 18 ABC—Eau Claire
- ⇒ WLAX/WEUX Fox 25/48—Eau Claire
- ⇒ WHTL 102.3 FM—Whitehall
- ⇒ Z-100 100.7 FM—Eau Claire
- ⇒ WAXX 104.5 FM, WAYY 790 AM, I-94 94.1 FM, WECL 92.9 FM, WWIS Radio
- ⇒ WEAU TV – Channel 13—Eau Claire
- ⇒ WKBT - La Crosse



## Attendance Policy

All parents are reminded to call the school by 9:00 a.m. on the day of your child's absence. Failure to notify the school by 9:00 a.m. may result in a disciplinary action for the student. We appreciate your cooperation on his. Again, if parents do not call, then we will call to confirm the fact that parents know where their children are (either at home or school), and that our children are safe. Thanks for your cooperation.

attendance  
**MATTERS**

**Newsletter Copy Editor:  
Tracy Halama**

**Production Editor:  
Linda Killian-Baures**

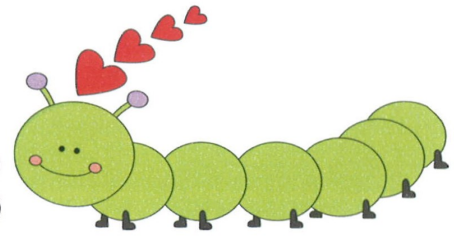
**Editorial Administrator:  
Mr. Barry Schmitt**

# January



Sun	Mon	Tue	Wed	Thu	Fri	Sat
	<p>1 NO SCHOOL</p> <p><i>Christmas Vacation</i></p>	<p>2 NO SCHOOL</p> <p>GBB vs Mondovi 6:00/7:30pm (H)</p> <p>BBB @ Granton 6:00/7:15pm</p>	<p>3 2:30 DISMISSAL</p> <p>7:00pm School Board Meeting</p>	<p>4 GBB @ C-FC 6:00/7:30pm</p>	<p>5 BBB @ Augusta 6:00 C Team 6:00 JV 7:30 Varsity</p>	<p>6 Wrestling @ Osseo 9:30am</p>
<p>7 OPEN GYM 5-8pm</p>	<p>8 BBB @ Elmwood 5:45/7:15pm</p> <p>C Team @ G-E-T 6:00pm</p>	<p>9 GBB @ Mel-Min 6:00/7:30pm</p>	<p>10 2:30 DISMISSAL</p>	<p>11 BBB vs C-FC (H) 4:30 C Team 6:00 JV 7:30 Varsity</p> <p>MS GBB @ Mel-Min 4:30pm</p>	<p>12 GBB vs WHTL 6:00/7:30pm (H)</p> <p>MS Wrestling @ G-E-T 5:00pm</p>	<p>13 Dorian – Vocal</p> <p>BBB C-Team Tournament @ Lincoln 10:00am</p>
<p>14 OPEN GYM 5-8pm</p> <p>Dorian Vocal</p>	<p>15 Dorian Vocal</p> <p>GBB @ Elmwood 5:45/7:15pm</p>	<p>16 BBB vs Mel-Min 4:30 C Team 6:00 JV 7:30 Varsity</p> <p>MS GBB vs Gilmanton 4:30pm</p>	<p>17 2:30 DISMISSAL</p>	<p>18 MS Wrestling (H) 5:00pm</p> <p>HS Wrestling (H) vs C-FC 6:30pm</p> <p>HS Wrestling (H) vs B-T 7:30pm</p> <p>MS GBB vs B-T 4:30pm (H)</p> <p>End of 2<sup>nd</sup> Qtr</p>	<p>19 NO SCHOOL TEACHER INSERVICE DAY</p> <p>GBB vs E-S 6:00/7:30pm (H)</p> <p>BBB @ WHTL 6:00/7:30pm</p> <p>MS Wrestling @ Arcadia 5:00pm</p>	<p>20 Wrestling @ Arcadia 9:15am</p>
<p>21 OPEN GYM 5-8pm</p>	<p>22</p>	<p>23 GBB @ Lincoln 6:00/7:30pm</p> <p>MS GBB @ AP 4:30pm</p>	<p>24 2:30 DISMISSAL</p>	<p>25 BBB @ E-S 6:00/7:30pm</p> <p>MS Wrestling @ C-FC 5:00pm</p> <p>HS Wrestling @ C-FC 6:30pm</p> <p>MS GBB vs C-FC 4:30pm (H)</p>	<p>26 GBB @ B-T 6:00/7:30pm</p> <p>MS Wrestling @ Mel-Min 5:00pm</p>	<p>27 Wrestling Indee Invite 9:45am</p>
<p>28 OPEN GYM 5-8pm</p>	<p>29</p>	<p>30 BBB vs Lincoln(H) 4:30 C Team 6:00 JV 7:30 Varsity</p> <p>MS GBB vs Lincoln 4:30pm (H)</p>	<p>31 2:30 DISMISSAL</p>			

# February 2018



Sun	Mon	Tue	Wed	Thu	Fri	Sat
<p>American Heart Month</p>				<p>1</p> <p>GBB vs EC Imman 6:00/7:30pm (H)</p> <p>HS Wrestling @ B-T 7:00pm</p> <p>MS Wrestling @ RKD 5:00pm</p> <p>MS Forensics @ EC North 4:00pm</p>	<p>2</p> <p>BBB @ B-T 6:00/7:30pm</p> <p>MS Wrestling Tournament (H) 5p</p>	<p>3</p> <p>Elk Rod &amp; Gun Ice Fishing Contest Bugle Lake</p>
<p>4</p> <p>SUPER BOWL</p>	<p>5</p> <p>GBB @ EC Arcadia 6:00/7:30pm</p>	<p>6</p> <p>GBB @ Pepin 7:30pm VARSITY</p> <p>BBB vs Spring Vally 6:00/7:30pm</p> <p>MS Wrestling @ WHT 5:00pm</p> <p>MS GBB @ B-T 4:30pm</p>	<p>7</p> <p>2:30 DISMISSAL</p> <p>7:00pm School Board Meeting</p>	<p>8</p> <p>BBB @ EC Imman C Team 4:30pm</p> <p>JV 6:00pm</p> <p>Varsity 7:30pm</p> <p>MS GBB @ Gilmanton 4:30pm</p> <p>MS Forensics @ EC North 4:00pm</p>	<p>9</p> <p>IT'S FRIDAY!</p> <p>JUST DANCE!</p>	<p>10</p> <p>HS WRESTLING REGIONAL (H)</p> <p>Varsity GBB (H) vs New Auburn 6:00p</p> <p>Varsity BBB vs New Auburn 7:30pm (H)</p>
<p>11</p> <p>OPEN GYM 5-8pm</p>	<p>12</p> <p>GBB vs Gilmanton 6:00/7:30pm (H)</p> <p>MS GBB @ C-FC 5:00pm</p>	<p>13</p> <p>BBB vs Alma-Pep 6:00/7:30pm (H)</p> <p>Wrestling Sect TBD</p>	<p>14</p> <p>2:30 DISMISSAL</p> <p>HAPPY VALENTINES DAY!!!</p>	<p>15</p> <p>GBB @ WHTL 6:00/7:30pm</p> <p>MSGBB vs A-P</p> <p>MS Wrestling (H)</p>	<p>16</p> <p>smile! IT'S Friday!</p>	<p>17</p> <p>Wrestling Sectional @ Osceola</p> <p>GBB Crossover @ WHTL</p>
<p>18</p> <p>OPEN GYM 5-8pm</p>	<p>19</p> <p>BBB @ Gilmanton 6:30/7:00pm</p> <p>MS Wrestling @ Mondovi 5:00pm</p> <p>MS Forensics @ WHTL 4:00pm</p>	<p>20</p> <p>GBB Regionals 7:00pm TBD</p>	<p>21</p> <p>2:30 DISMISSAL</p>	<p>22</p> <p>12:15 DISMISSAL</p> <p>State Wrestling</p> <p>Parent/Teacher Conferences</p>	<p>23</p> <p>NO SCHOOL State Wrestling GBB Reg Champ</p> <p>No School!</p>	<p>24</p> <p>State Wrestling</p> <p>GBB Reg Champ 7:00pm TBD</p> <p>BBB Crossover @ Mel-Min</p>
<p>25</p> <p>OPEN GYM 5-8pm</p>	<p>26</p> <p>oh Monday, let's do this!</p>	<p>27</p> <p>BBB Regionals 7:00pm TBD</p> <p>MS Wrestling @ G-E-T 5:00pm</p> <p>ACT Testing</p>	<p>28</p> <p>2:30 DISMISSAL</p> <p>ACT Testing</p>	<p>"to love and be loved is like feeling the sun from both sides" ❤️</p>		

### Who is responsible for transportation? Parents are responsible for transporting their children to and from school.

If transportation is required in the individualized education program (IEP) for a child with a disability, it must be provided by the nonresident district.

School districts *may* provide transportation to open enrollment pupils if they wish. Usually, if transportation is provided, parents must transport the pupil to a location in the nonresident district.

Low-income parents may apply to the DPI for partial reimbursement of their transportation costs.

### Can a parent select a specific school in the pupil's nonresident school district?

Yes. A parent may request a specific school or program in the nonresident district. However, assignment to the requested school or program *is not guaranteed* and your pupil may be assigned to a different school other than the one requested. It is up to each nonresident district to determine a pupil's school assignment.

### Can an open enrolled pupil participate in sports and other extra-curricular activities in the nonresident school district?

Open enrolled pupils have the same rights and responsibilities as resident pupils.

Inter-scholastic athletics are governed by the Wisconsin Interscholastic Athletic Association (WIAA), which has rules concerning transfer pupils. Parents should check with the school district's athletic director about eligibility.

### Important open enrollment dates

**February 5 – April 30, 2018** – Parents must submit applications online or directly to the nonresident school district.

**June 8, 2018** – Nonresident school districts must mail notices of approval or denial. If the application is approved, the school district must notify the parents of the specific school or program to which the pupil is assigned. If the application is denied, parents have 30 days to file an appeal.

**June 15, 2018** – Resident districts must notify applicants if the application is denied. If the application is denied, parents have 30 days to file an appeal.

**June 29, 2018** – Parents of accepted applicants must notify the nonresident district if the pupil will attend the nonresident district in the 2018-19 school year. If the parent fails to make this notification, the nonresident district may refuse to allow the pupil to attend the district.

### For more information contact:

Public School Open Enrollment Program  
Wisconsin Department of Public Instruction  
P.O. Box 7841, Madison, WI 53707-7841  
Toll-free: 888-245-2732

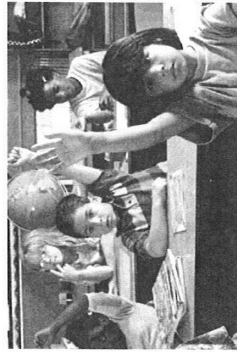
Email: [openenrollment@dpi.wi.gov](mailto:openenrollment@dpi.wi.gov)

Web site: <https://dpi.wi.gov/oe>



2018-19

The Wisconsin Department of Public Instruction does not discriminate on the basis of sex, race, color, religion, creed, age, national origin, ancestry, pregnancy, marital status or parental status, sexual orientation, or disability.



## 2018-19 School Year

### Full-Time Inter-District

# Open Enrollment

## In Wisconsin Public Schools

(Information for Parents)

Wisconsin Department of Public Instruction  
Tony Evers, PhD, State Superintendent

## You may apply for open enrollment from February 5-April 30, 2018

### What is Public School Open Enrollment?

Wisconsin's inter-district public school open enrollment program allows parents to apply for their children to attend school districts other than the one in which they live. Applications may be submitted to up to three nonresident school districts.

### Who may participate in open enrollment?

Pupils in 5-year-old kindergarten to grade 12 may apply to participate in open enrollment.

Open enrollment for prekindergarten, 4-year-old kindergarten and early childhood education is limited. Parents should call their resident school districts to find out if their preschool-aged children qualify for open enrollment.

### How and when may parents apply?

The open enrollment application period for the 2018-19 school year is from February 5-April 30, 2018. The application period closes at 4:00 p.m. on April 30, 2018. Late applications will not be accepted for any reason.

Parents may apply online at <https://dpi.wi.gov/oe>.

### Can I apply to a virtual charter school under open enrollment?

A pupil may only open enroll to an online/virtual school if: (1) the school has been created as a virtual charter school that meets the requirements of the charter school law [Wis. Stats. 118.40 (8)] or (2) the pupil is required to physically attend school in the nonresident school district every day that school is in session. Other important things to know about applying to virtual charter schools:

- A virtual charter school is not homeschooling. Pupils attending virtual charter schools are public school pupils.

- You must know the nonresident school district in which the virtual charter school is located. If you have any questions about this, call the virtual charter school.

- You must know your resident school district in order to apply.

- A list of virtual charter schools may be found at <https://dpi.wi.gov/sms/charter-schools/virtual-charter-schools>.

### Can an application be rejected?

Yes. Nonresident school districts may deny an application if regular or special education **space is not available** for the pupil, **special education or related services** are not available; or if the pupil has been **referred for a special education evaluation** but has not yet been evaluated. Nonresident school districts may also deny an application if the pupil has been **expelled** during the current or preceding two years for certain violent conduct or if the pupil was **habitually truant** from the nonresident school district during any semester in the current or previous school year.

If there are more applications than spaces, pupils must be selected randomly, after giving preference to pupils already attending school in the nonresident school district and siblings of currently-attending pupils.

Some school districts establish waiting lists to fill unused spaces, but others do not.

### Can a resident district prevent a pupil from leaving?

Yes, in limited circumstances. A resident district can deny a pupil's application for an invalid application (early or late application or missing information), ineligibility due to age (too young or too old), or if the resident district does not

offer the same type of prekindergarten, four-year-old kindergarten, or early childhood program as the nonresident district or the pupil is not eligible for the program in the resident district. These are also reasons that a nonresident district can deny an application.

### Can parents appeal if an application is denied?

Parents whose applications are denied may appeal to the DPI within 30 days of the denial. State law requires the DPI to uphold the school district's decision unless DPI finds that the decision was arbitrary or unreasonable. The DPI's decision may be appealed to circuit court.

### Must pupils reapply every year?

Once a pupil is accepted into a nonresident school district, the pupil may continue to attend that district without reapplication except that:

- The nonresident district may require a pupil to reapply one time—at the beginning of middle school, junior high or high school.
- A pupil may be returned to the resident school district if the special education required in a new or revised IEP is not available in the nonresident district or there is no space.
- A pupil who has become habitually truant in the nonresident district may be returned to the resident district.

### Is there a cost to parents for open enrollment?

There is no tuition cost to parents for participation in open enrollment. Parents of open enrolled pupils may be charged the same fees as resident pupils.



**Start Saving Now!**

Kwik Trip will give the Independence School District 5 cents for every cap and bag top from Nature's Touch Milk and 16 oz. or larger Nature's Touch Ice Cream bar code, and 10 cents for every tan Glazers price oval.

All proceeds will go to the Independence School District to help with field trip funding.



**More Chances To Save & Earn!**

5¢ for every Nature's Touch product cap or milk bag top and 10¢ for each Glazers donut price oval collected.

**All of these Nature's Touch™ and Glazers® products will help your school or organization earn cash faster.**

**Nature's Touch Products**

- Homogenized Whole Milk: Bags, Gallons, Half Gallons
- Reduced Fat 2% Milk: Bags, Gallons, Half Gallons, Quarts, Pints, Half Pints
- Low Fat 1% Milk: Bags, Gallons, Half Gallons, Quarts, Pints
- Fat-Free Skim Milk: Bags, Gallons, Half Gallons, Quarts, Pints, Half Pints
- Chocolate Flavored Milk: Bags, Half Gallons, Quarts, Pints, Half Pints
- Polar Vanilla Flavored Milk: Pints
- Root Beer Float Flavored Milk: Pints
- Orange Juice (from 100% juice concentrate): Bags, Gallons, Half Gallons, Quarts, Pints, Half Pints
- Orange-Pineapple Juice (from 100% juice concentrate): Quarts, Pints
- Drinking Water: Gallons, Quarts, 20 oz., Half Pints

**Nature's Touch Products, continued**

- Egg Nog: Quarts, Pints, Half Pints
- Chino™ Iced Cappuccino: Pints
- Ice Tea: Gallons
- Flavored Waters (20 oz.): Raspberry, Cherry, Strawberry, Lemon, Lime
- Flavored Waters (Half Pints): Raspberry, Strawberry, Watermelon

**Kwik Quencher® Fruit Drinks**

- Orange Flavored, Fruit Punch Flavored, Lemon-Lime Flavored: Gallons

**Glazers Donuts**

- Regular: Dozens and Half Dozens
- Specialty: Dozens and Half Dozens



**We Appreciate Your Support!**

Please continue collecting for our school. The money earned goes towards field trips for our students in grades 4K through 8<sup>th</sup> grade. Items that you can collect and bring to our school include:

<ul style="list-style-type: none"> <li>• Box Tops</li> <li>• Pop Tabs</li> </ul>	<ul style="list-style-type: none"> <li>• Milk Moola Caps and Bags</li> <li>• Cans 4 Kids (aluminum cans) <i>cans can be put in fence by football field</i></li> </ul>
----------------------------------------------------------------------------------	---------------------------------------------------------------------------------------------------------------------------------------------------------------------------

©Copyright 2011 www.sparkfun.com



- Independence Public School
- Independence K-12 Art
- 3rd Grade at Independence
- 4th Grade Independence Elementary
- Independence Athletic Booster Club
- Indees Volleyball
- Independence Indees Girls Basketball
- Independence Indees Boys Basketball
- Independence Indees Music Dept
- Independence Gilmanton-Football

- Independence-Gilmanton Track & Field
- Independence High School Powerlifting
- Indees Fastpitch Softball
- Indee Drama Club
- Independence FFA
- Independence Indees Baseball
- Independence Post Prom
- Independence Prom 2016
- Indees Themes

### BOXTOPS 4 EDUCATION

Thank you to everyone that sent Boxtops in this year! We will continue to collect Boxtops for the 2017-2018 school year. Our goal for this year is \$1,000. Please help us reach our goal by sending Boxtops to school. They can be sent with a student or dropped off in the main office. Last year the money raised was used to support field trips. Again, thank you for your efforts.

**Don't Forget to Collect  
BOX TOPS!**



and send them to your school

### Use of Our School

The following are Adult/Community Opportunities to use our school:

- Walking and community exercise 5:45am – 10:00pm
- Meeting Areas/Rooms available on request by calling the office
- Athletic facilities can be reserved by filing a Facilities Request form available at the school.
- Weight room with a membership (see Patti Klimek in Student Services)

### CHECK OUT OUR WEBSITE

[www.indps.k12.wi.us](http://www.indps.k12.wi.us) is the web address for our dynamic website which is changing and evolving. We are hoping to make our website a 1 stop place where parents find information on school, school events, forms, the school calendar, lunch menu, and more. Where students find resources. And where anyone can go to find information on our district, where you can access our community link and find information on our Indee Booster Club, the Fitness Center, a link to our Volunteer page, current and past newsletters, School Board minutes, videos, and more.

**SCHOOL CLOSING DUE TO INCLEMENT WEATHER  
School District of Independence  
2017-2018**

\*\*\*\*\*

**School Closings will also be posted on the Independence School District webpage  
and Facebook page, as well as a voicemail delivered to all families.**

**ANNOUNCEMENTS WILL BE MADE ON THE FOLLOWING STATIONS:**

**Whitehall**

102.3 FM

**Winona**

KWNO 1230AM

KG Country 1380AM

KG-95.3FM

CD Country99.3FM

Soft Rock 101.1 FM

**Eau Claire**

The Mix 98.1 FM

I-94 94.1FM

WAXX 104.5FM

WAYY 790AM

COOL 92.9FM

Z-100 100.7FM

WEAU TV 13

WQOW TV 18

B-95 95.1 FM

ROCK 92.1 FM

News Talk 880 AM

Sports Radio 1400 AM

Moose Country 106.7 FM

**LaCrosse**

Classic Rock 100.1

WIZM 1410AM

Z93 93.3FM

WKBT TV 8

WLFN 1490 AM

CC 106.3

MAGIC 105 104.9

EAGLE 102.7

**Black River Falls**

WWIS 99.7FM

**Tomah**

WTMB 1490 AM

**Eden Prairie, MN**

KMSP 9

[www.wlcr.com](http://www.wlcr.com)

[www.CC1063.com](http://www.CC1063.com)

[www.lacrosseradiogroup.net](http://www.lacrosseradiogroup.net)

[www.indps.k12.wi.us](http://www.indps.k12.wi.us)

The newsletter of  
Independence School District  
Independence, WI 54747